

CONTINUED FROM PRECEDING PAGE

AIRSPACE: CLASS D.

RADIO AIDS TO NAVIGATION: NOTAM FILE AEX.

(VH) (H) VORTACW 116.1 AEX Chan 108 N31°15.40' W92°30.06' 327° 4.9 NM to fld. 76/3E.

VOR unusable:

035°-065° blo 2,000'
 066°-094° byd 35 NM blo 3,000'
 115°-120° byd 40 NM blo 18,000'
 130°-215° byd 40 NM
 185°-200° byd 35 NM blo 3,000'
 201°-214° byd 35 NM blo 2,000'
 215°-260° blo 2,000'
 220°-229° byd 40 NM
 230°-240° byd 40 NM blo 8,000'
 241°-245° byd 40 NM
 246°-255° byd 40 NM blo 8,000'
 261°-285° byd 35 NM blo 2,000'
 265°-270° byd 49 NM blo 18,000'
 271°-285° byd 40 NM
 286°-290° byd 40 NM blo 18,000'
 300°-304° byd 40 NM blo 5,000'
 300°-304° byd 68 NM
 305°-325° byd 40 NM
 340°-080° byd 40 NM
 357°-034° byd 35 NM blo 3,000'

ILS 110.1 I-ERJ Rwy 14. Class IT.

COMM/NAV/WEATHER REMARKS: Multicom frequency 130.0 avbl.

ESLER RGNL (ESF)(KESF) P (ARNG) 10 NE UTC-6(-5DT) N31°23.69' W92°17.75'

112 B NOTAM FILE ESF

RWY 09-27: H5998X150 (ASPH-GRVD) S-75, D-150, 2S-175,
2D-220 HIRL

RWY 09: REIL. PAPI(P4L)—GA 3.0° TCH 51'. Trees.

RWY 27: MALSR.

RWY 14-32: H5600X150 (ASPH-GRVD) S-75, D-150, 2S-175,
2D-220 MIRL 0.4% up NW

RWY 14: REIL. PAPI(P4L)—GA 3.0° TCH 36'. Trees.

RWY 32: REIL. PAPI(P4L)—GA 3.0° TCH 56'. Fence.

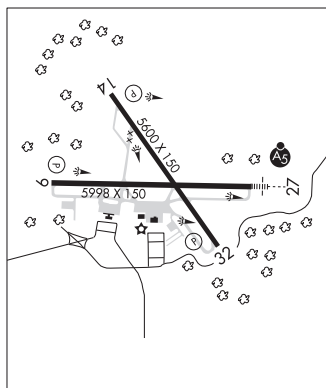
SERVICE: FUEL 100LL, JET A LGT ACTVT MALSR Rwy 27; REIL Rwy
09, 14-32; MIRL Rwy 14-32; HIRL Rwy 09-27; twy lgts Twys A,
B, C, D and E—CTAF. Rwy 09 REILS OTS. Rwy 14 REIL OTS. Rwy
14 PAPI OTS. MILITARY— FUEL A+ (avbl 1300-2300Z± Tue-Fri; OT,
C318-443-5566.) (NC-100LL)AIRPORT REMARKS: Attended Tue-Fri 1300-2330Z±. Fuel avbl Tue-Fri
1300-2300Z±; Sat-Mon on call in advance call 318-443-5566.
100LL self serve 24hrs. Birds on and invof aprt seasonally. PAEW adj
rwy and twys. Ctc aprt mgr for dsgrnd ramp space for pub use. Rwy
14 and Rwy 32 rwy markings severely faded.

AIRPORT MANAGER: 985-750-0485

WEATHER DATA SOURCES: ASOS 119.425 (318) 484-9031.

COMMUNICATIONS: CTAF/UNICOM 122.8

® MAKS APP/DEP CON 125.4

HOUSTON
H-6I, L-21B, 22E
IAP

CONTINUED ON NEXT PAGE

CONTINUED FROM PRECEDING PAGE

CLEARANCE DELIVERY PHONE: For CD ctc Maks Apch at 726-780-0456.

RADIO AIDS TO NAVIGATION: NOTAM FILE AEX.

ALEXANDRIA (VH) (H) VORTACW 116.1 AEX Chan 108 N31°15.40' W92°30.06' 049° 13.4 NM to fld. 76/3E.

VOR unusable:

- 035°-065° blo 2,000'
- 066°-094° byd 35 NM blo 3,000'
- 115°-120° byd 40 NM blo 18,000'
- 130°-215° byd 40 NM
- 185°-200° byd 35 NM blo 3,000'
- 201°-214° byd 35 NM blo 2,000'
- 215°-260° blo 2,000'
- 220°-229° byd 40 NM
- 230°-240° byd 40 NM blo 8,000'
- 241°-245° byd 40 NM
- 246°-255° byd 40 NM blo 8,000'
- 261°-285° byd 35 NM blo 2,000'
- 265°-270° byd 49 NM blo 18,000'
- 271°-285° byd 40 NM
- 286°-290° byd 40 NM blo 18,000'
- 300°-304° byd 40 NM blo 5,000'
- 300°-304° byd 68 NM
- 305°-325° byd 40 NM
- 340°-080° byd 40 NM
- 357°-034° byd 35 NM blo 3,000'

ILS/DME 111.5 I-ESF Chan 52 Rwy 27. Class IA. ILS/DME unmonitored. DME unusable byd 25° right of course.

ALLEN PARISH (See OAKDALE on page 131)

ALVIN CALLENDER FLD (See NEW ORLEANS NAS JRB (ALVIN CALLENDER FLD) on page 129)

ANGER N30°36.38' W90°25.27' NOTAM FILE DRI.

NEW ORLEANS

NDB (LOMW) 212 HP 178° 5.1 NM to Hammond Northshore Rgnl. 94/0E.

ARCADIA-BIENVILLE PARISH (5FØ) 2 SW UTC-6(-5DT) N32°31.93' W92°57.17'

MEMPHIS

440 B NOTAM FILE DRI

L-17E

RWY 14-32: H3000X75 (ASPH) S-16 MIRL

RWY 14: Trees.

RWY 32: Trees.

SERVICE: LGT ACTVT MIRL Rwy 14-32—CTAF. MIRL Rwy 14-32 OTS indefly. Rotg bcn 0.5 mile SE of arpt OTS.

AIRPORT REMARKS: Unattended. For arpt attendant call 318-263-2013.

Golf crs adj to arpt. Hold shrt line nstd dist fm rwy. Ctc aprt mgr for dsngnd ramp space for pub use.

AIRPORT MANAGER: 318-263-8456

COMMUNICATIONS: CTAF 122.9

CLEARANCE DELIVERY PHONE: For CD ctc Fort Worth ARTCC at 817-858-7584.

RADIO AIDS TO NAVIGATION: NOTAM FILE DRI.

ELM GROVE (VL) (L) VORTACW 116.65 EMG Chan 113(Y)

N32°24.02' W93°35.71' 069° 33.5 NM to fld. 160/7E.

controlled by SHV RAPCON

TACAN AZIMUTH unusable:

293°-297° byd 17 NM

VOR unusable:

057°-062° byd 40 NM

210°-216° byd 47 NM

217°-220° byd 40 NM

302°-307° byd 40 NM

347°-003° byd 34 NM

DME unusable:

233°-240° byd 36 NM

293°-297° byd 17 NM

347°-003° byd 34 NM

