

LOC/DME I-APC <b>111.3</b> Chan 50	APP CRS <b>006°</b>	Rwy Ldg TDZE Apt Elev	<b>5930</b> <b>17</b> <b>36</b>
--	------------------------	-----------------------------	---------------------------------------

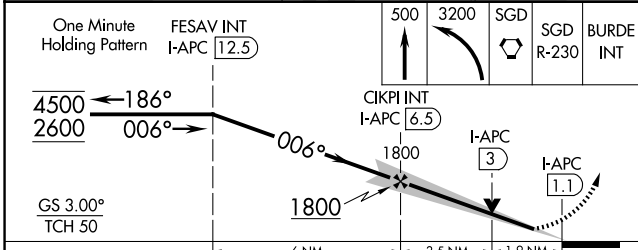
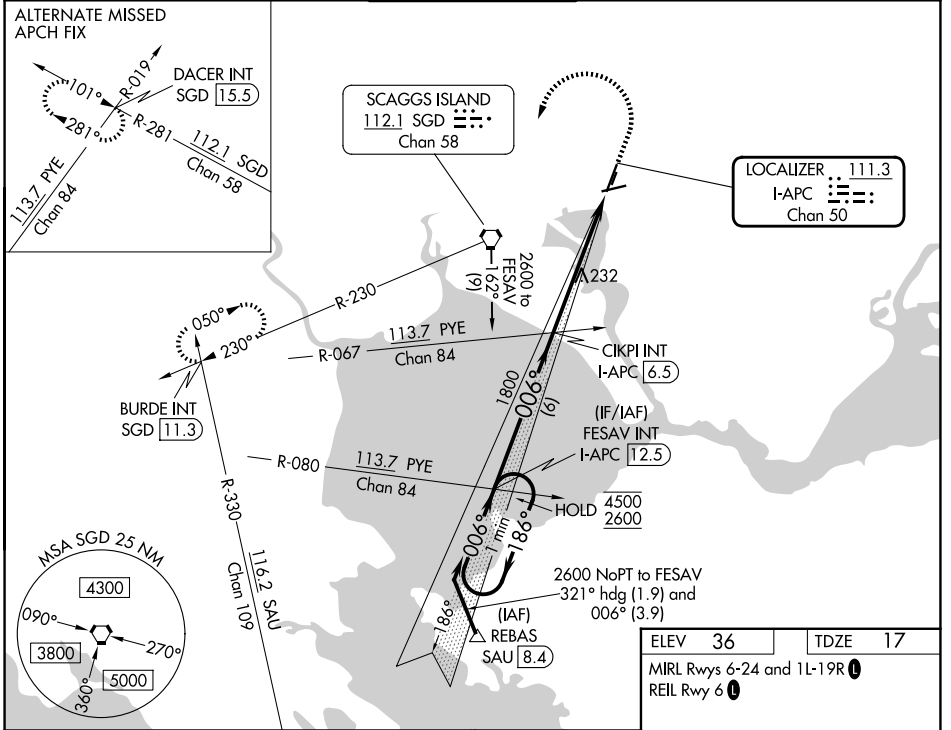
# I LS Z or LOC Z RWY 1L

NAPA COUNTY (APC)

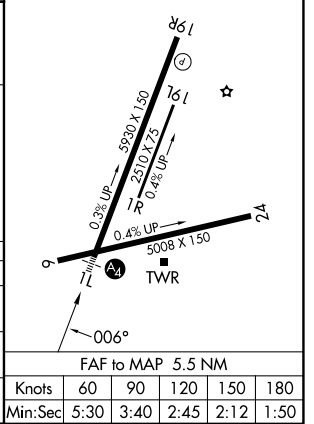
**⚠** Autopilot coupled approach NA below 530. Inop table does not apply to S-ILS 1L minimums all Cats. Circling NA for Cats A, B, and C east of Rwy 19R and northwest of Rwy 24. For inop ALS, increase S-LOC 1L Cat C/D visibility to 1/8 SM. Circling NA for Cat D east of Rwy 19L and 1R.

**MALS** MISSED APPROACH: Climb to 500 then climbing left turn to 3200 direct SGD VORTAC and on SGD VORTAC R-230 to BURDE INT/SGD 11.3 DME and hold.

ATIS <b>124.05</b>	OAKLAND CENTER <b>127.8 353.5</b>	NAPA TOWER* <b>118.7</b> (CTAF) <b>257.8</b>	GND CON <b>121.7</b>	UNICOM <b>122.95</b>
-----------------------	--------------------------------------	---	-------------------------	-------------------------



ELEV 36	TDZE 17
MIRL Rwy 6-24 and 1L-19R	
REIL Rwy 6	



CATEGORY	A	B	C	D
S-ILS 1L	217-3/4 200 (200-3/4)			
S-LOC 1L	680-3/4	663 (700-3/4)	680-13/4	663 (700-13/4)
CIRCLING	680-1	644 (700-1)	1280-3 1244 (1300-3)	1300-3 1264 (1300-3)

SW-2, 11 JUN 2026 to 09 JUL 2026

SW-2, 11 JUN 2026 to 09 JUL 2026

Knots	60	90	120	150	180
Min:Sec	5:30	3:40	2:45	2:12	1:50