

WAAS CH <b>87105</b> <b>W01B</b>	APP CRS <b>007°</b>	Rwy Ldg <b>8300</b> TDZE <b>21</b> Apt Elev <b>26</b>
--	------------------------	---

# RNAV (GPS) Y RWY 1R

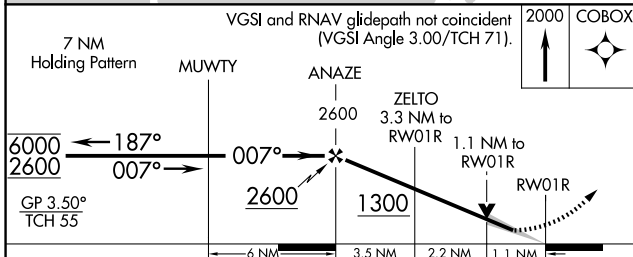
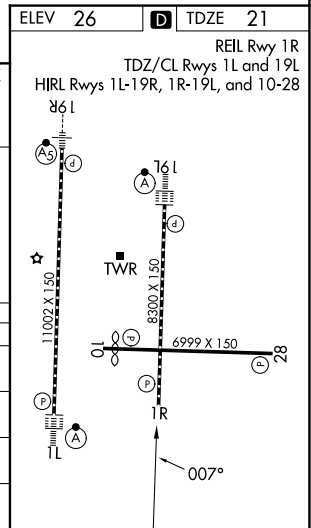
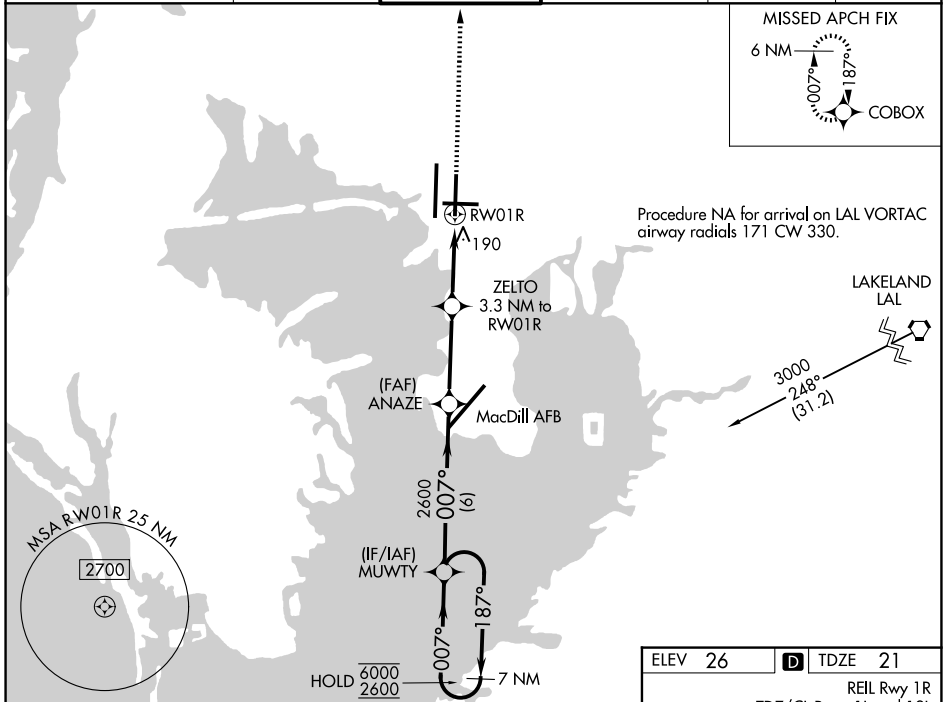
TAMPA INTL (TPA)

RNP APCH - GPS.

**▼** For uncompensated Baro-VNAV systems, LNAV/VNAV NA below 4°C or above 54°C.  
**▲** Simultaneous approach authorized with Rwy 1L LNAV procedure NA during simultaneous operations. Use of FD or AP required during simultaneous operations.

MISSED APPROACH: Climb to 2000 direct COBOX and hold.

ARR <b>126.45</b>	D-ATIS <b>128.475</b>	DEP <b>118.5 307.175</b>	TAMPA APP CON <b>119.5 269.4</b>	TAMPA TOWER <b>121.7 269.4</b>	GND CON <b>133.6</b>	CLNC DEL <b>CPDLC</b>
----------------------	--------------------------	-----------------------------	-------------------------------------	-----------------------------------	-------------------------	--------------------------



CATEGORY	A	B	C	D	E
LPV DA	291/45	270 (300-7/8)			NA
LNAV/VNAV DA	440/60	419 (500-1 1/4)			NA
LNAV MDA	440/55	419 (500-1)	440/60	419 (500-1 1/4)	
CIRCLING	600-1	574 (600-1)	680-1 3/4 654 (700-1 3/4)	980-3	954 (1000-3)

SE-3, 19 FEB 2026 to 19 MAR 2026

SE-3, 19 FEB 2026 to 19 MAR 2026