

WAAS CH <b>82247</b> <b>W20A</b>	APP CRS <b>198°</b>	Rwy Ldg <b>3602</b> TDZE <b>103</b> Apt Elev <b>103</b>
--	------------------------	---

# RNAV (GPS) RWY 20

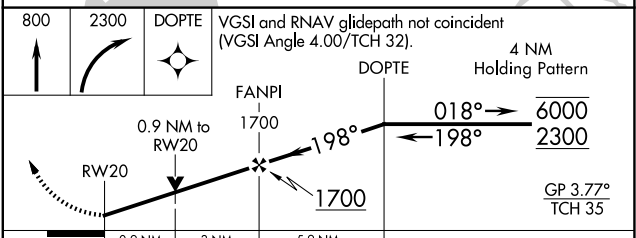
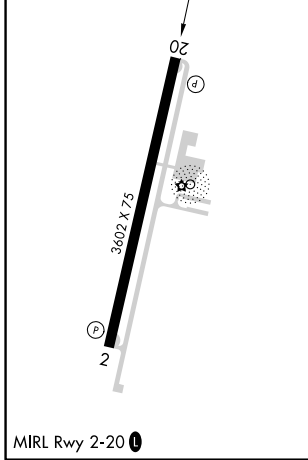
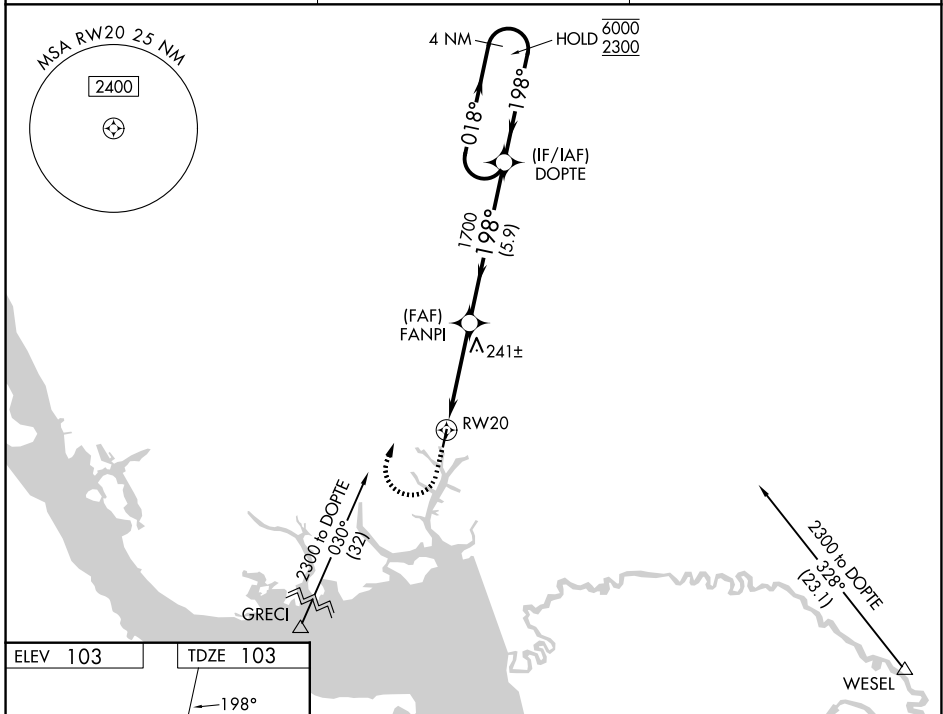
SANTEE COOPER RGNL (MINI)

RNP APCH - GPS.

**⚠** Rwy 20 helicopter visibility reduction below 3/4 SM NA. For uncompensated Baro-VNAV systems, LNAV/VNAV NA below -15°C or above 51°C.

MISSED APPROACH: Climb to 800, then climbing right turn to 2300 direct DOPTe and hold.

AWOS-3 <b>120.175</b>	SHAW APP CON* <b>125.4 318.1</b>	UNICOM <b>122.8 (CTAF) 0</b>
--------------------------	-------------------------------------	---------------------------------



CATEGORY	A	B	C	D
LPV DA	426-1 323 (400-1)			NA
LNAV/VNAV DA	500-1 397 (400-1 1/8)			NA
LNAV MDA	500-1	397 (400-1)	500-1 397 (400-1 1/8)	NA
CIRCLING	540-1 437 (500-1)	560-1 457 (500-1)	800-2 697 (700-2)	NA

SE-2, 11 JUN 2026 to 09 JUL 2026

SE-2, 11 JUN 2026 to 09 JUL 2026