

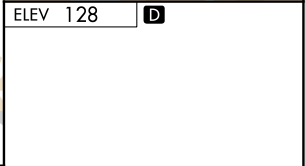
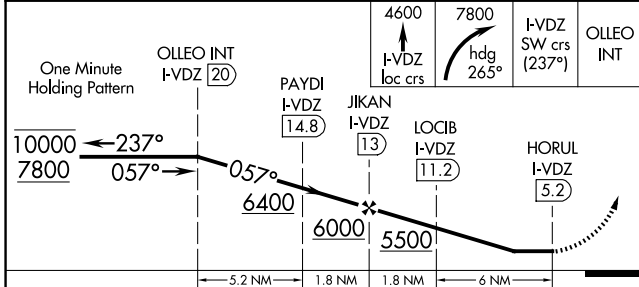
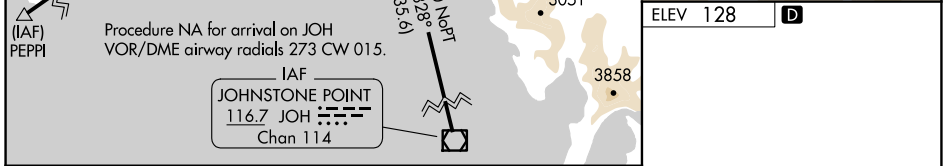
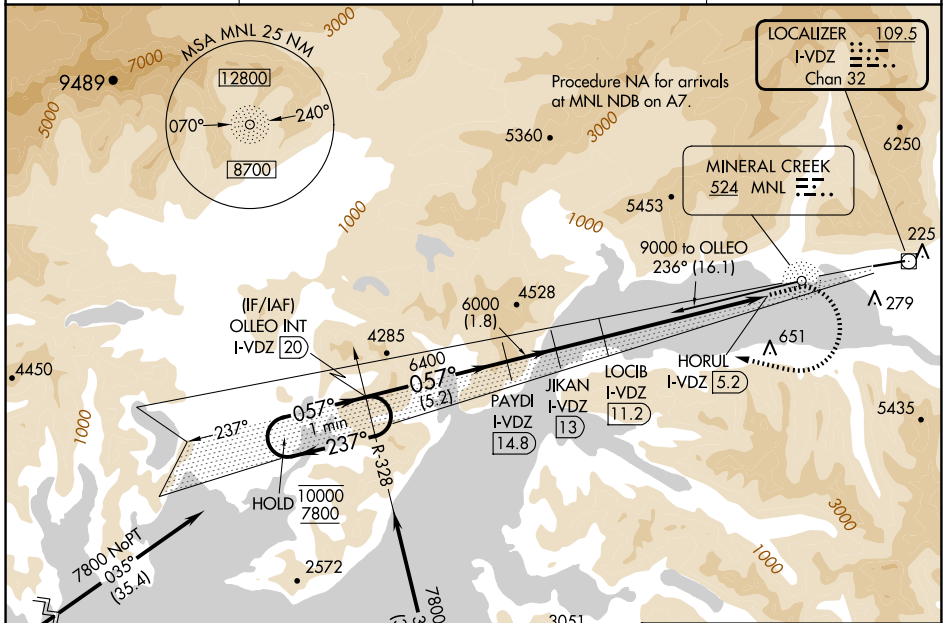
LOC/DME I-VDZ 109.5 Chan 32	APP CRS 057°	Rwy Ldg TDZE Apt Elev N/A N/A 128
---	------------------------	---

LDA-H

VALDEZ PIONEER FLD (VDZ) (PAVD)

DME required. RNP APCH-GPS. From PEPEI.		<p>MISSED APPROACH: Climb on I-VDZ localizer course to 4600 then climbing right turn to 7800 on heading 265° and I-VDZ SW course (237°) to OLLEO INT/I-VDZ 20 DME and hold, continue climb-in-hold to 7800.</p>
<p>⚠ Circling NA north of Rwy 6-24. Circling Rwy 24 NA at night. Rwy 24 helicopter visibility reduction below 1 SM NA. When local altimeter setting not received, use Cordova altimeter setting and increase all MDAs 1020 feet.</p> <p>❄ -10°C</p>		

AWOS-3P 118.8	ANCHORAGE CENTER 119.3 269.4	JUNEAU RADIO 122.2	CTAF 122.9 📶
-------------------------	--	------------------------------	-------------------------------



CATEGORY	A	B	C	D
CIRCLING	4460-5	4332 (4400-5)		5200-5 5072 (5100-5)

AK, 22 JAN 2026 to 19 MAR 2026

AK, 22 JAN 2026 to 19 MAR 2026