

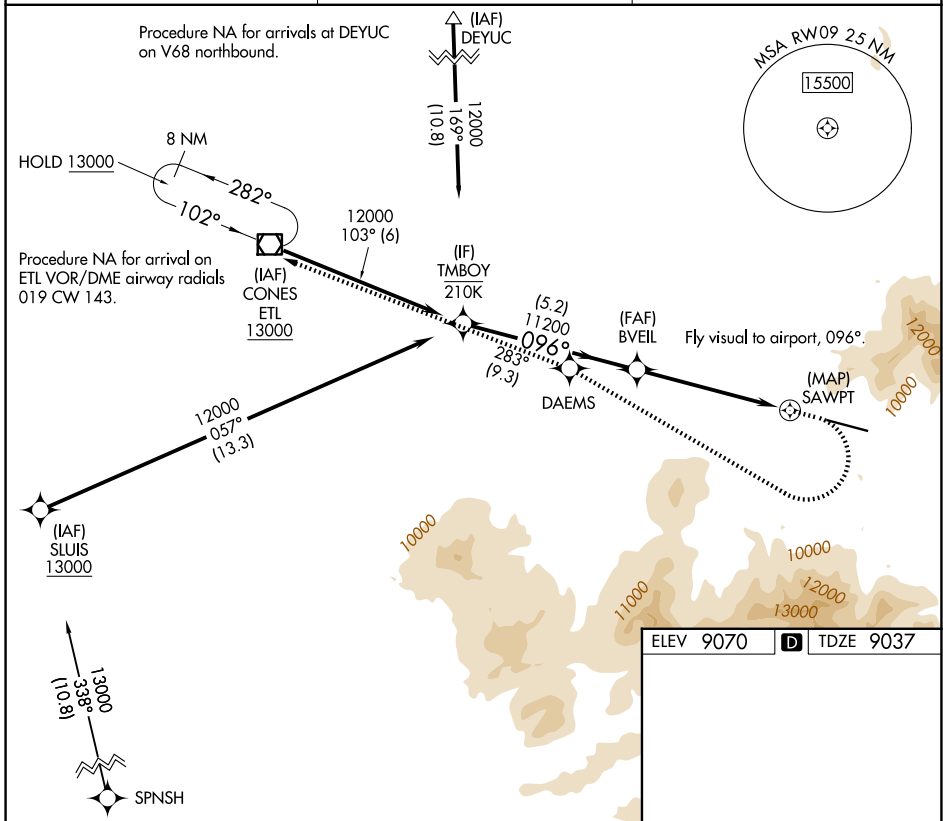
WAAS CH 50619 W09F	APP CRS 096°	Rwy Ldg TDZE Apt Elev	6911 9037 9070
--	------------------------	-----------------------------	---

RNAV (GPS) X RWY 9

TELLURIDE RGNL (TEX)

RNP APCH - GPS.	MISSED APPROACH: (Do not exceed 165K until DAEMS) Climb to 10440 then climbing right turn to 15000 direct DAEMS and track 283° to ETL VOR/DME and hold. *Missed approach requires minimum climb of 355 feet per NM to 12400; if unable to meet climb gradient, see RNAV (GPS) Y RWY 9.
<p>When local altimeter setting not received, procedure NA.</p> <p>NA -17°C</p>	

AWOS-3 118.325	DENVER CENTER 125.35 354.05	UNICOM 123.0 (CTAF) 0
--------------------------	---------------------------------------	---------------------------------



TMBOY	10440	15000	DAEMS	ETL
12000	↑	↷	✦	◻
GP 3.50° TCH 46	Fly visual to airport, 096°.			
11200	BVEIL	SAWPT		
5.2 NM	4.6 NM	1.1 NM		
CATEGORY	A	B	C	D
LPV DA*	10152-3 1115 (1100-3)			NA

ELEV 9070	TDZE 9037
-----------	-----------

HIRL Rwy 9-27 0

REIL Rws 9 and 27 0

SW-1, 11 JUN 2026 to 09 JUL 2026

SW-1, 11 JUN 2026 to 09 JUL 2026