

# RNAV (GPS) RWY 31

WILLOW (UUO)(PAUO)

APP CRS <b>313°</b>	Rwy ldg TDZE Apt Elev	<b>4000</b> <b>213</b> <b>215</b>
------------------------	-----------------------------	-----------------------------------------

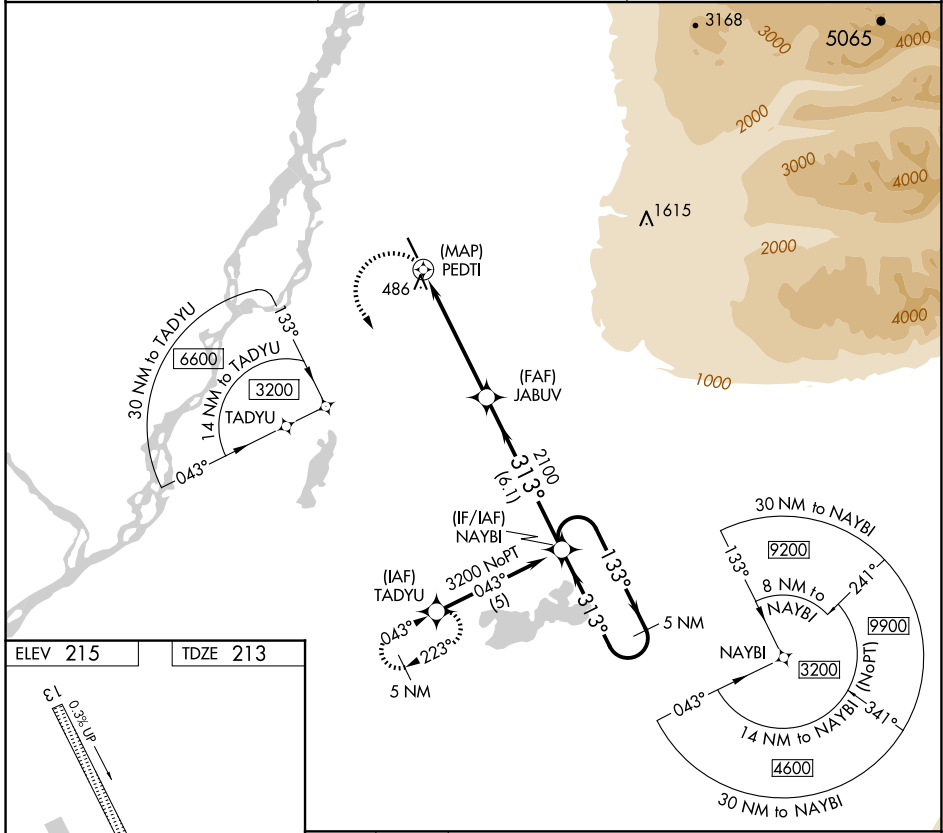
**▼** Use Wasilla altimeter setting.  
**▲ NA** Procedure NA at night.  
 DME/DME RNP-0.3 NA.

**MISSED APPROACH:** Climbing left turn to 3200 direct TADYU and hold.

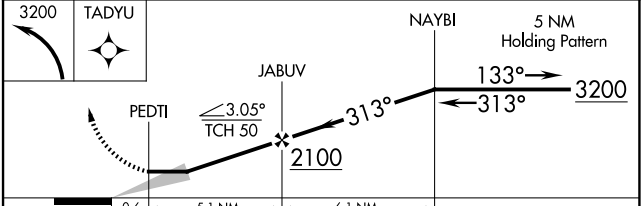
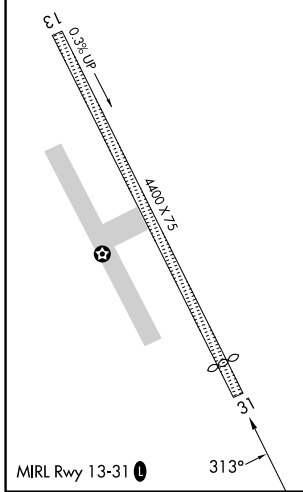
IYS/PAWS AWOS-3P  
**135.25**

ANCHORAGE CENTER  
**133.7 279.6**

CTAF  
**122.8**



ELEV 215	TDZE 213
----------	----------



CATEGORY	A	B	C	D
LNAV MDA	1220-1¼ 1007 (1100-1¼)	1220-1½ 1007 (1100-1½)	1220-3 1007 (1100-3)	NA
<b>C</b> CIRCLING	1220-1¼ 1005 (1100-1¼)	1220-1½ 1005 (1100-1½)	1220-3 1005 (1100-3)	NA

AK, 22 JAN 2026 to 19 MAR 2026

AK, 22 JAN 2026 to 19 MAR 2026