


WAAS CH <b>78301</b> <b>W14A</b>	APP CRS <b>137°</b>	Rwy Ldg <b>4999</b> TDZE <b>18</b> Apt Elev <b>18</b>
--	------------------------	---

# RNAV (GPS) RWY 14

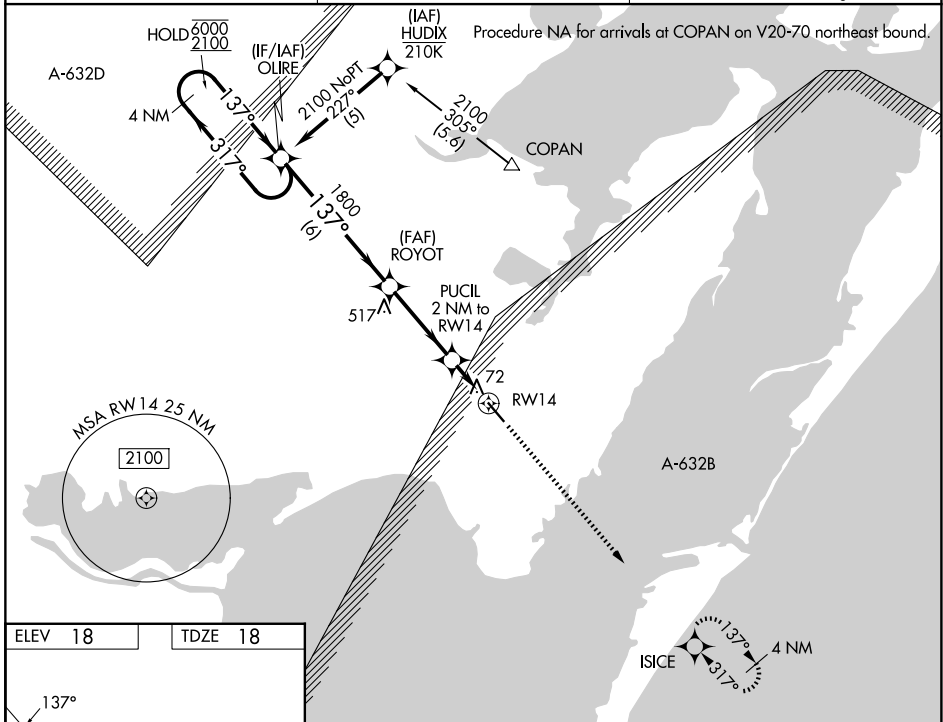
INGLESIDE RGNL (TFP)

RNP APCH - GPS.

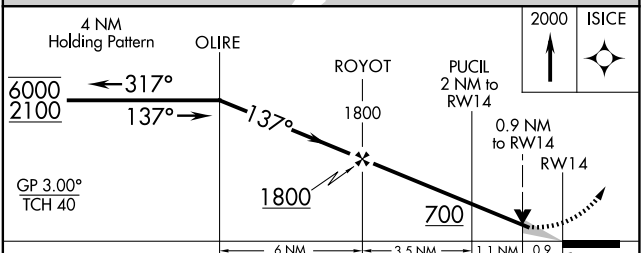

 For uncompensated Baro-VNAV systems, LNAV/VNAV NA below -15°C or above 54°C.

MISSED APPROACH:  
Climb to 2000 direct ISICE and hold.

AWOS-3 <b>118.775</b>	CORPUS APP CON <b>120.9 348.725</b>	UNICOM <b>122.7 (CTAF) 0</b>
--------------------------	--	---------------------------------



ELEV 18	TDZE 18
---------	---------



CATEGORY	A	B	C	D
LPV DA		268-1	250 (300-1)	
LNAV/VNAV DA		286-1	268 (300-1)	
LNAV MDA		340-1	322 (400-1)	
CIRCLING	520-1	502 (600-1)	860-2½ 842 (900-2½)	980-3 962 (1000-3)

MIRL Rwy 14-32 0  
REIL Rwy 14 and 32

SC-3, 11 JUN 2026 to 09 JUL 2026

SC-3, 11 JUN 2026 to 09 JUL 2026