

WAAS CH 82601 W32A	APP CRS 317°	Rwy Ldg 4999 TDZE 18 Apt Elev 18
--	------------------------	---

RNAV (GPS) RWY 32

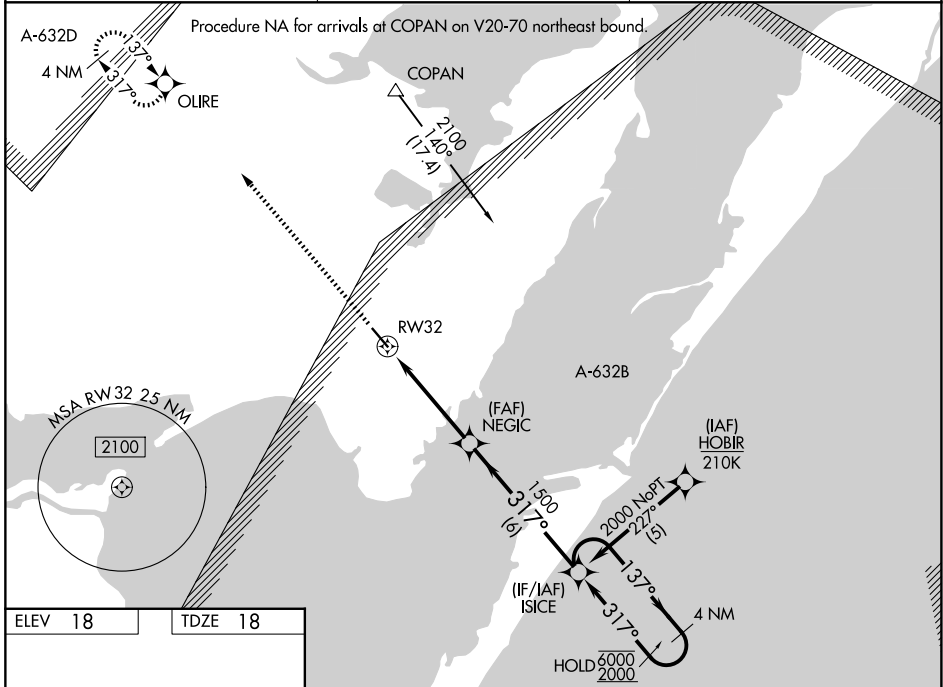
INGLESIDE RGNL (TFP)

RNP APCH - GPS.

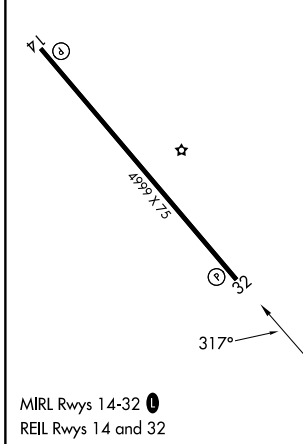
- For uncompensated Baro-VNAV systems, LNAV/VNAV NA below -15°C or above 54°C.
-
-

MISSED APPROACH:
Climb to 2100 direct
OLIRE and hold.

AWOS-3 118.775	CORPUS APP CON 120.9 348.725	UNICOM 122.7 (CTAF) 0
--------------------------	--	---------------------------------



ELEV 18	TDZE 18
---------	---------



2100	OLIRE	VGS1 and RNAV glidepath not coincident (VGS1 Angle 3.00/TCH 33).		ISICE	4 NM Holding Pattern
↑					
		1.4 NM to RW32	1500	317°	137° → 6000 ← 317° 2000
		1.4 NM	3.2 NM	6 NM	GP 3.00° TCH 40
CATEGORY	A	B	C	D	
LPV DA		268-1	250 (300-1)		
LNAV/VNAV DA		405-1½	387 (400-1½)		
LNAV MDA	480-1	462 (500-1)	480-1¾	462 (500-1¾)	
CIRCLING	520-1	502 (600-1)	860-2½ 842 (900-2½)	980-3 962 (1000-3)	

SC-3, 11 JUN 2026 to 09 JUL 2026

SC-3, 11 JUN 2026 to 09 JUL 2026