

WAAS CH <b>78347</b> <b>W26A</b>	APP CRS <b>260°</b>	Rwy Ldg TDZE Apt Elev	<b>3700</b> <b>1908</b> <b>1908</b>
--	------------------------	-----------------------------	---

# RNAV (GPS) RWY 26

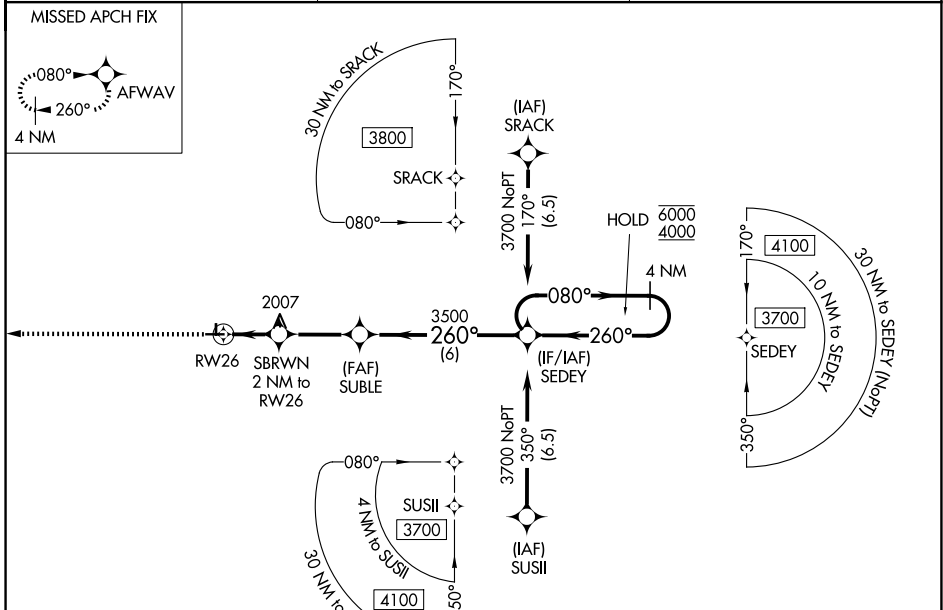
WASHBURN MUNI (5C8)

RNP APCH - GPS.

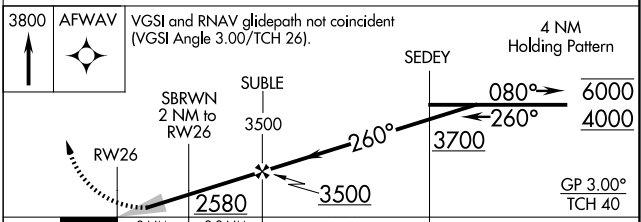
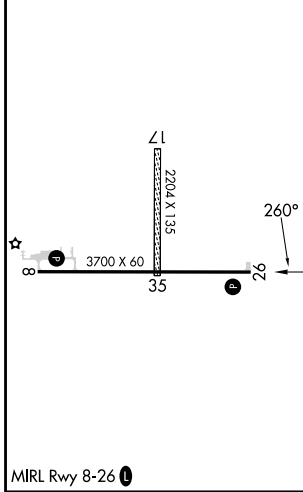
Baro-VNAV NA. Circling NA to Rwy 17 and 35. Use HZE altimeter setting. When not received, use BIS altimeter setting and increase LPV DA to 2276 feet; increase LNAV/VNAV DA to 2326 feet and all visibilities 1/8 SM. Increase all MDAs 60 feet and LNAV visibility Cat C 1/8 SM, and Circling Cat C 1/4 SM.

MISSED APPROACH: Climb to 3800 direct AFWAV and hold.

HZE AWOS-3PT <b>118.675</b>	MINNEAPOLIS CENTER <b>127.6 279.6</b>	CTAF <b>122.9</b>
--------------------------------	--	----------------------



ELEV 1908	TDZE 1908
-----------	-----------



CATEGORY	A	B	C	D
LPV DA	2227-1	319 (400-1)		NA
LNAV/VNAV DA	2277-1	369 (400-1)		NA
LNAV MDA	2380-1	472 (500-1)	2380-1 3/8 472 (500-1 3/8)	NA
CIRCLING	2420-1 512 (600-1)	2460-1 552 (600-1)	2680-2 1/4 772 (800-2 1/4)	NA

NC-1, 11 JUN 2026 to 09 JUL 2026

NC-1, 11 JUN 2026 to 09 JUL 2026